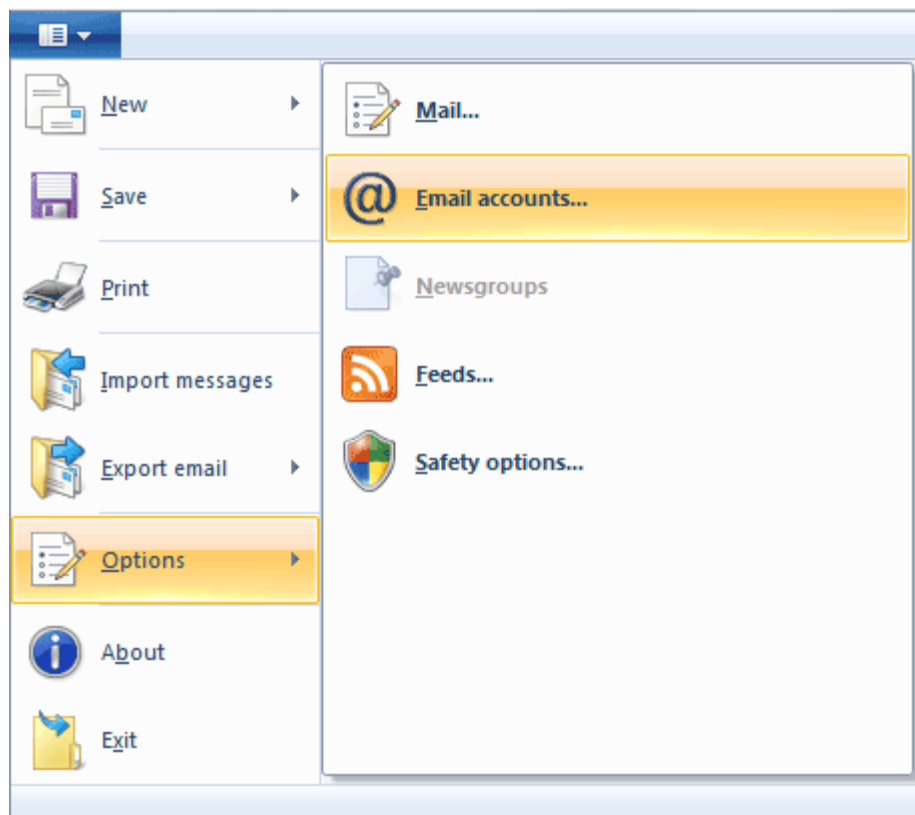
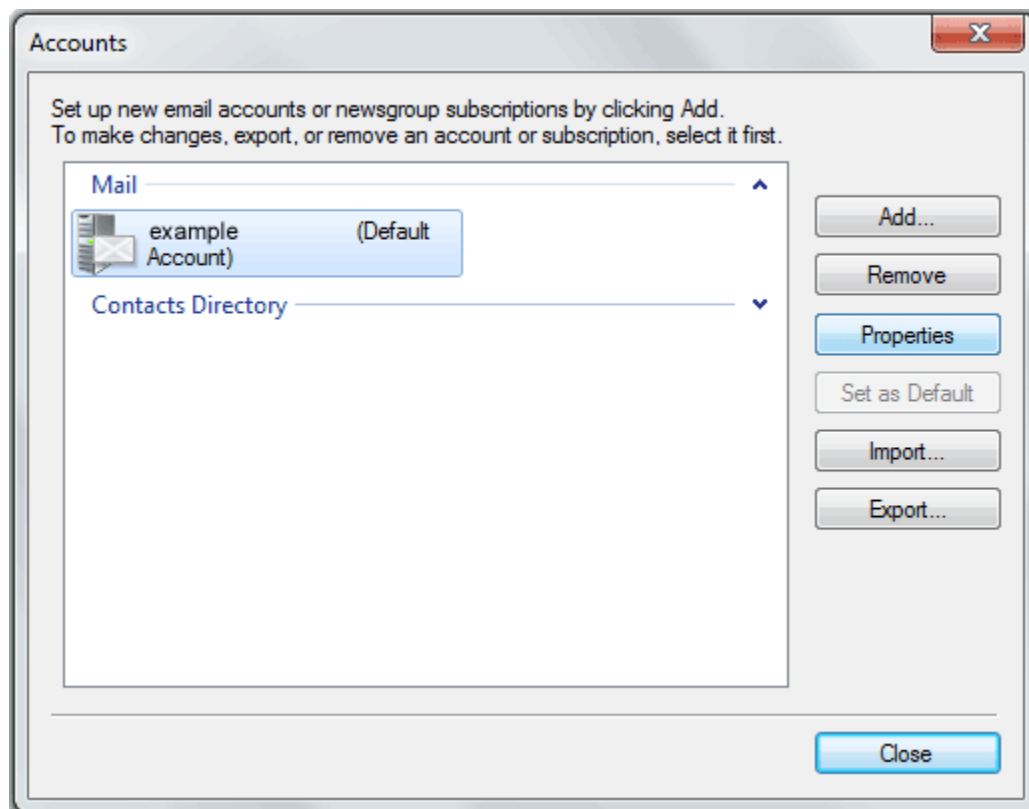


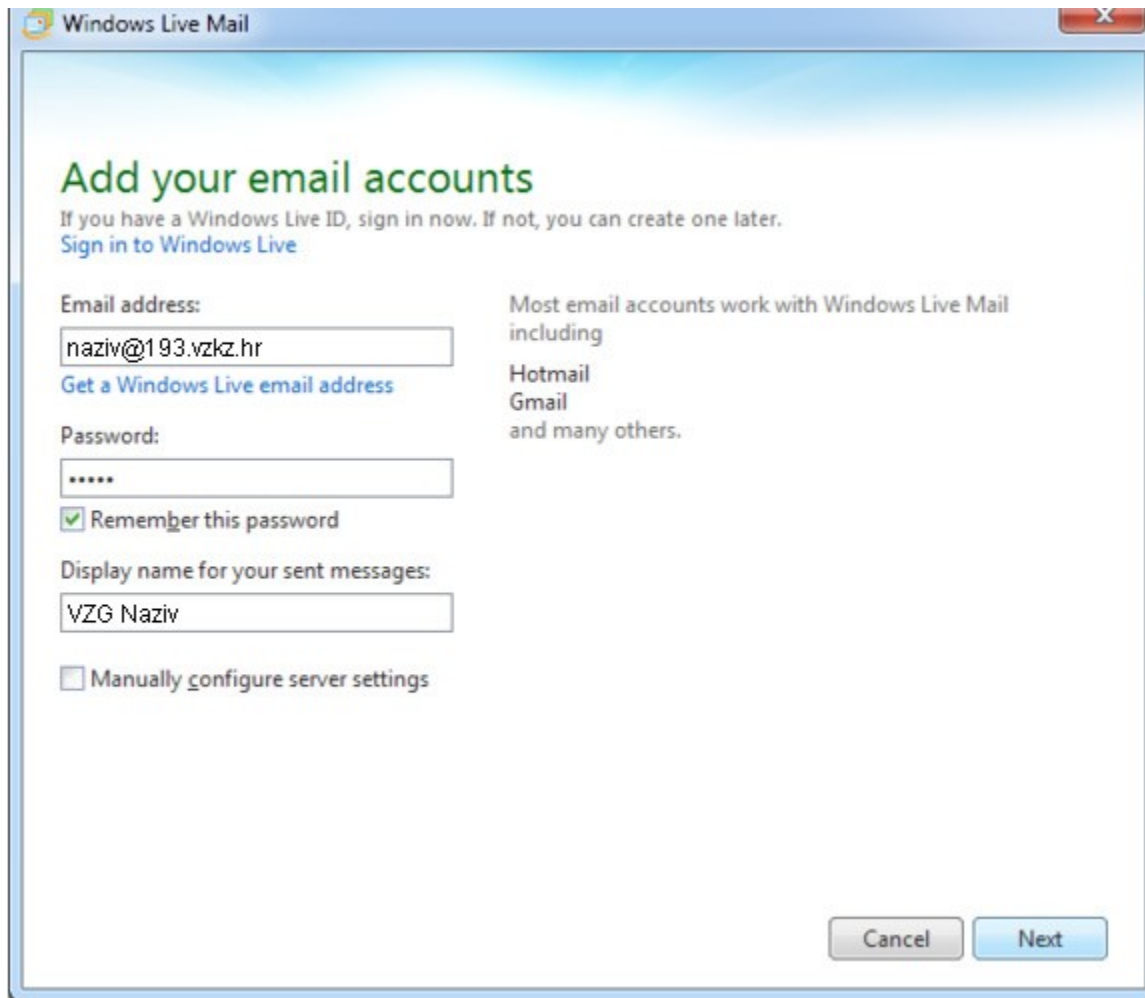
1. U programu kliknite na glavni gumb (plave pozadine, lijevo od izbornika Home, Folders...), te kliknite Options -> E-mail accounts.



2. Otvara se prozor Accounts. Kliknite na gumb Add uz desni rub prozora, te zatim označite E-mail account i kliknite na Next.



3. Popunite polja Vašim podacima pa kliknite na **Next**.



The image shows a screenshot of the 'Windows Live Mail' application window. The title bar reads 'Windows Live Mail'. The main content area has a light blue gradient background. At the top, the heading 'Add your email accounts' is displayed in green. Below it, a sub-heading reads 'If you have a Windows Live ID, sign in now. If not, you can create one later.' followed by a blue link 'Sign in to Windows Live'. The form contains several input fields and checkboxes. The 'Email address:' field contains 'naziv@193.vzk.hr' and has a blue link 'Get a Windows Live email address' below it. The 'Password:' field contains six dots. Below the password field is a checked checkbox 'Remember this password'. The 'Display name for your sent messages:' field contains 'VZG Naziv'. At the bottom left is an unchecked checkbox 'Manually configure server settings'. On the right side of the form, there is text: 'Most email accounts work with Windows Live Mail including Hotmail Gmail and many others.' At the bottom right of the window are two buttons: 'Cancel' and 'Next'.

Windows Live Mail

Add your email accounts

If you have a Windows Live ID, sign in now. If not, you can create one later.
[Sign in to Windows Live](#)

Email address:
naziv@193.vzk.hr
[Get a Windows Live email address](#)

Password:

 Remember this password

Display name for your sent messages:
VZG Naziv

Manually configure server settings

Most email accounts work with Windows Live Mail including
Hotmail
Gmail
and many others.

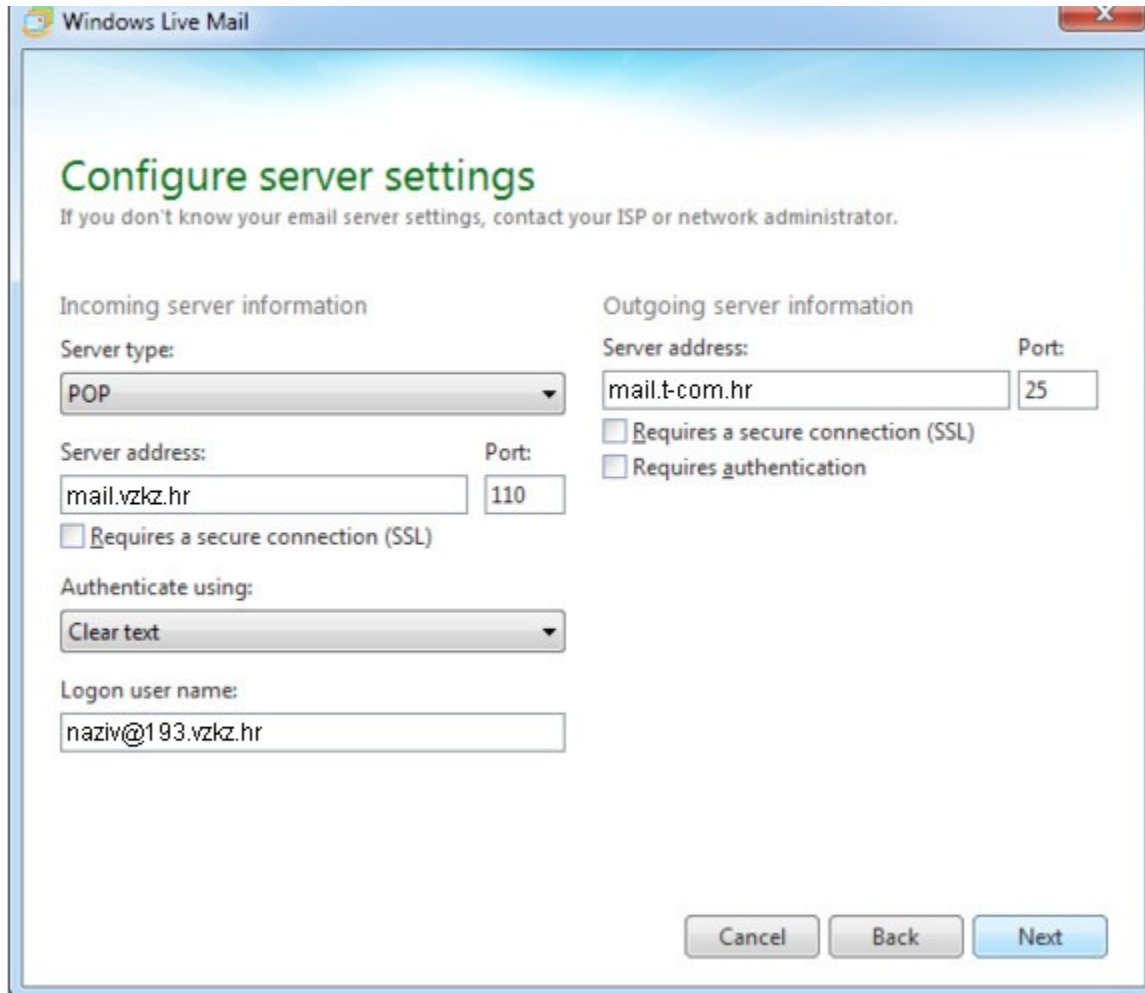
Cancel Next

4. Popunite polje za poslužitelj ulazne pošte (**incoming server**) sa **mail.vzkz.hr** .

U polje poslužitelj odlazne pošte (**outgoing server**) upišite server Vašeg Internet operatora: za T-Com: mail.t-com.hr, Iskon - mail.iskon.hr, Optima: mail.optinet.hr, Vip - mail.vip.hr, CarNet - mail.cmu.carnet.hr, Bnet - mail.xnet.hr...)

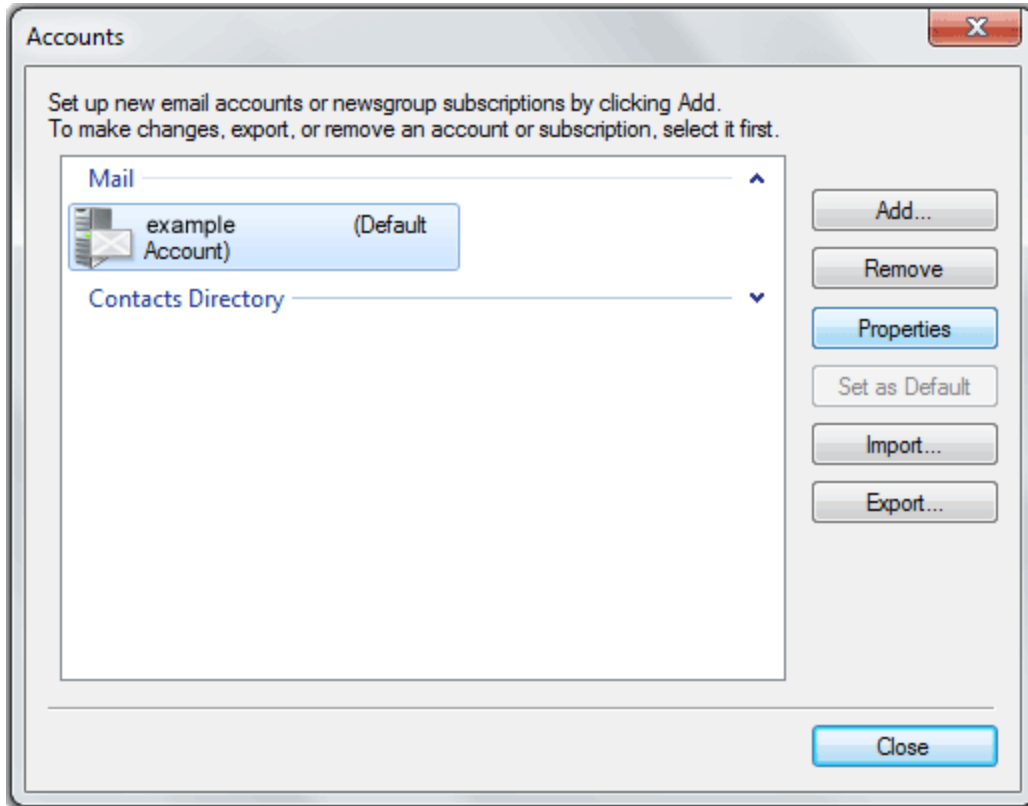
Logon user name treba biti jednako Vašoj e-mail adresi.

Kliknite na **Next, Finish.**



The screenshot shows the 'Configure server settings' dialog box in Windows Live Mail. The window title is 'Windows Live Mail'. The main heading is 'Configure server settings' with a subtitle: 'If you don't know your email server settings, contact your ISP or network administrator.' The dialog is divided into two columns: 'Incoming server information' and 'Outgoing server information'. In the 'Incoming server information' section, the 'Server type' is set to 'POP', the 'Server address' is 'mail.vzkz.hr', the 'Port' is '110', and the 'Authenticate using' dropdown is set to 'Clear text'. There is an unchecked checkbox for 'Requires a secure connection (SSL)'. The 'Logon user name' field contains 'naziv@193.vzkz.hr'. In the 'Outgoing server information' section, the 'Server address' is 'mail.t-com.hr' and the 'Port' is '25'. There are two unchecked checkboxes: 'Requires a secure connection (SSL)' and 'Requires authentication'. At the bottom right, there are three buttons: 'Cancel', 'Back', and 'Next'.

5. Opet bi trebali vidjeti dolje prikazani prozor **Accounts** (ukoliko prozor nije vidljiv, kliknite u izbornik Account -> Properties). Označite upravo dodani račun i kliknite **Properties**.



6. Ukoliko imate potrebu čuvati kopije mailova na serveru, na kartici advanced uključite opciju „Leave a copy of messages on the server“, te uključite i opciju „Remove from server after...“, a pod broj dana upišite 5-10 dana (kako bi izbjegli zagušenje zbog ograničenog prostora na serveru), a možete uključiti i opciju „Remove from server when deleted from 'Deleted items'“.

Ako nemate potrebu čuvati kopije mailova gore navedene opcije isključite.

