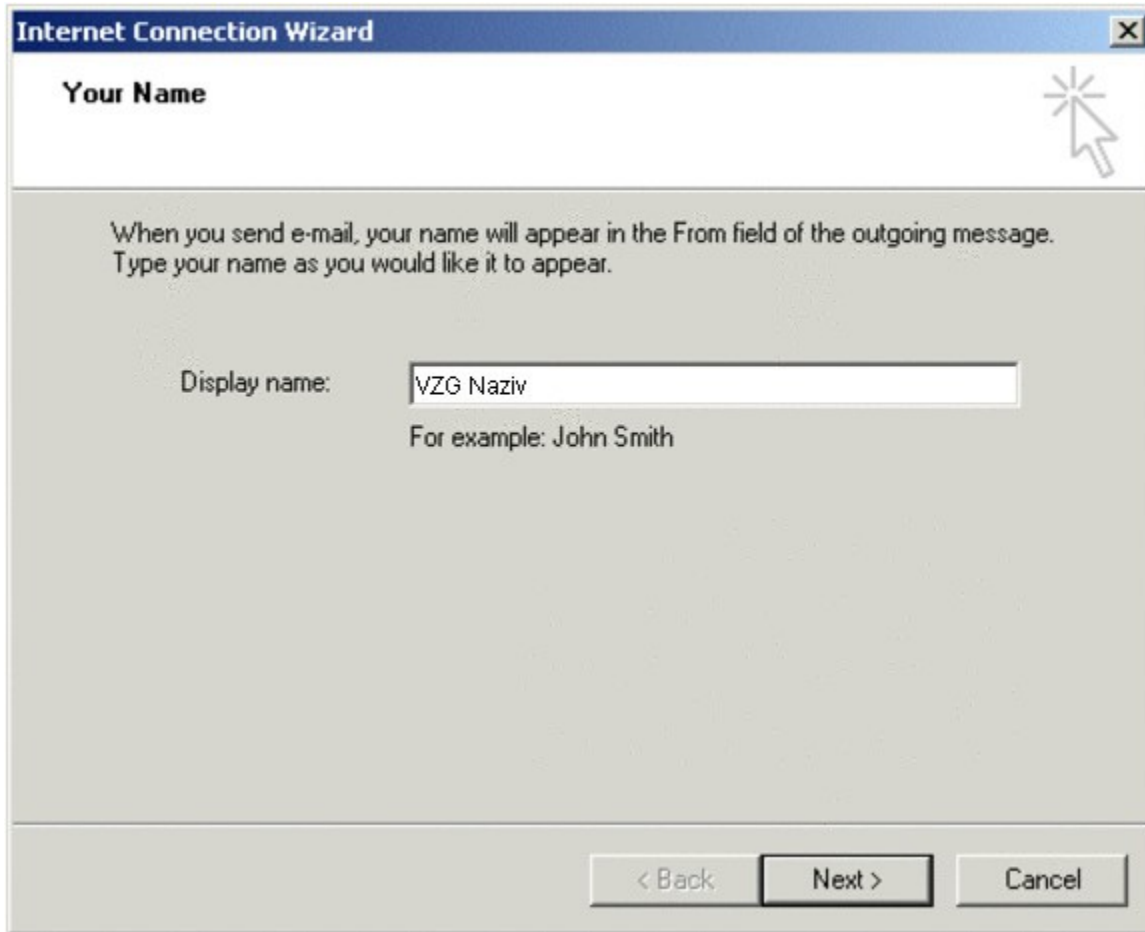


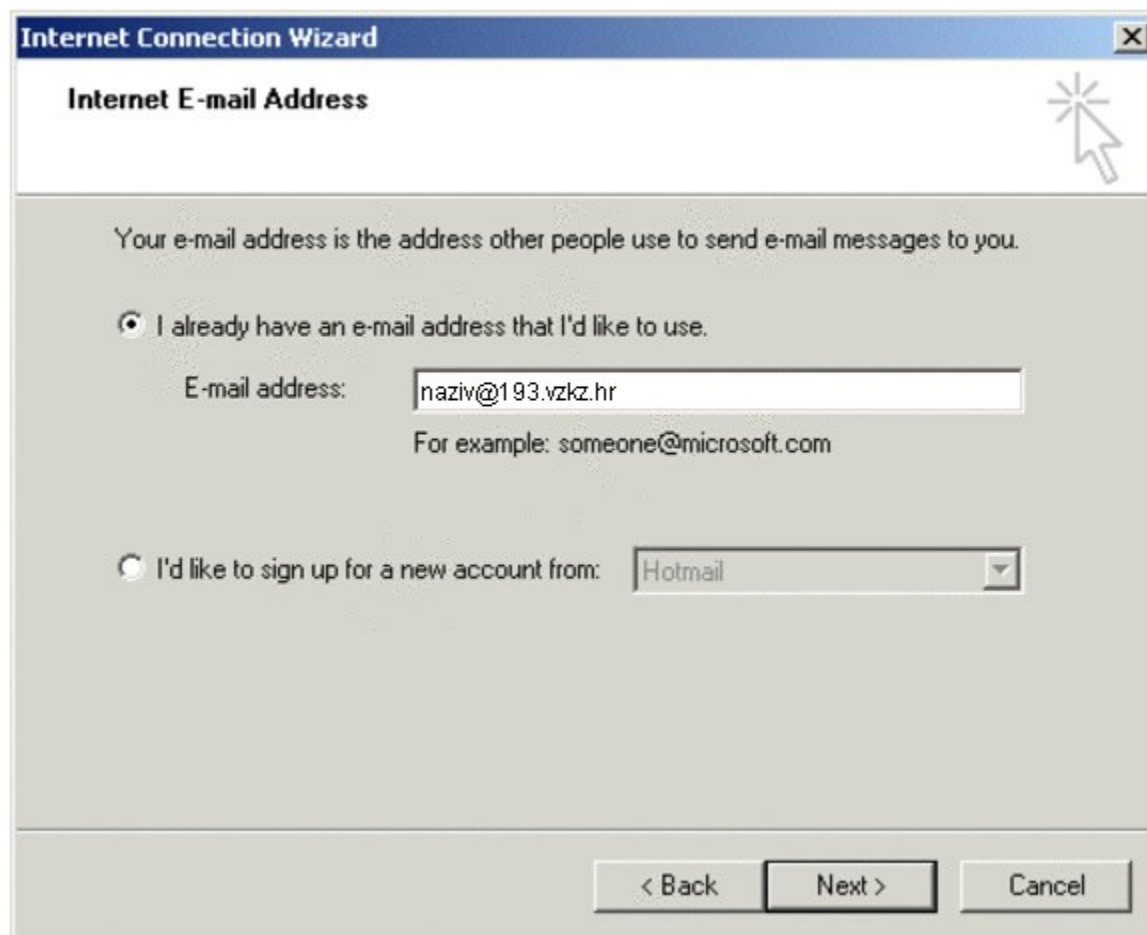
1. Kliknite u izborniku opciju **Tools** pa **Accounts**. Zatim kliknite karticu **Mail**. Ako već imate definiranu adresu, ona će se tu pojaviti. Kliknite na gumb **Add** te odaberite opciju **Mail...** .

2. Prvi dijaloški okvir **Your Name** traži od vas da u praznu rubriku upišete naziv zajednice/postrojbe.



Kliknite gumb **Next>** .

3. Pojavljuje se dijaloški okvir **Internet E-mail Address**. Odaberite opciju **I already have an e-mail address that I'd like to use**, a u polje **E-mail address:** upišite svoju *e-mail* adresu, u našem primjeru *naziv@193.vzkz.hr*

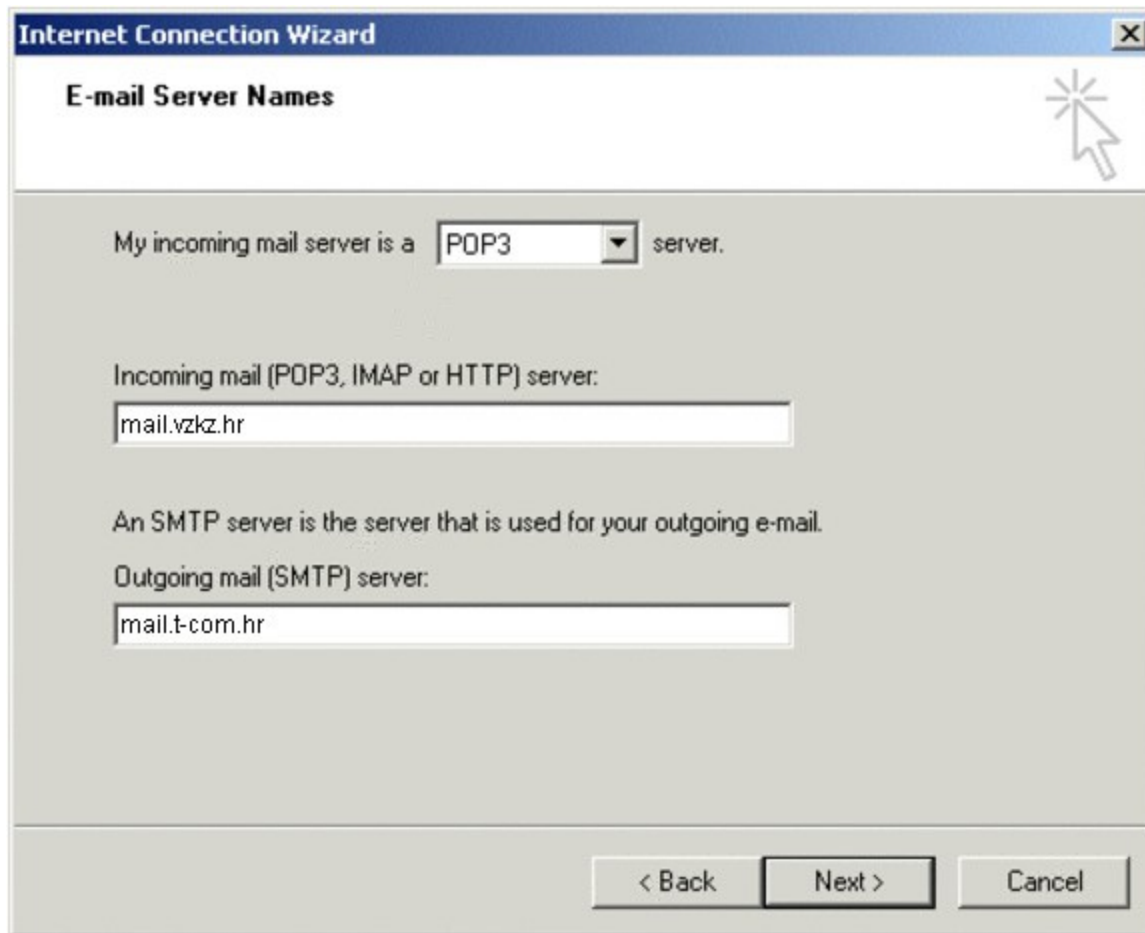


Kliknite gumb **Next>** .

4. U dijaloški okvir **E-mail Server Names** upisuju se podaci o poslužiteljima.

U rubriku **Incoming mail (POP3, IMAP or HTTP)** server upišite **mail.vzkz.hr**

U rubriku **Outgoing mail (SMTP) server** upišite server Vašeg Internet operatora: za T-Com: mail.t-com.hr, Iskon - mail.iskon.hr, Optima: mail.optinet.hr, Vip - mail.vip.hr, CarNet - mail.cmu.carnet.hr, Bnet - mail.xnet.hr...)



The screenshot shows a window titled "Internet Connection Wizard" with a sub-header "E-mail Server Names". The window contains the following text and input fields:

My incoming mail server is a server.

Incoming mail (POP3, IMAP or HTTP) server:

An SMTP server is the server that is used for your outgoing e-mail.

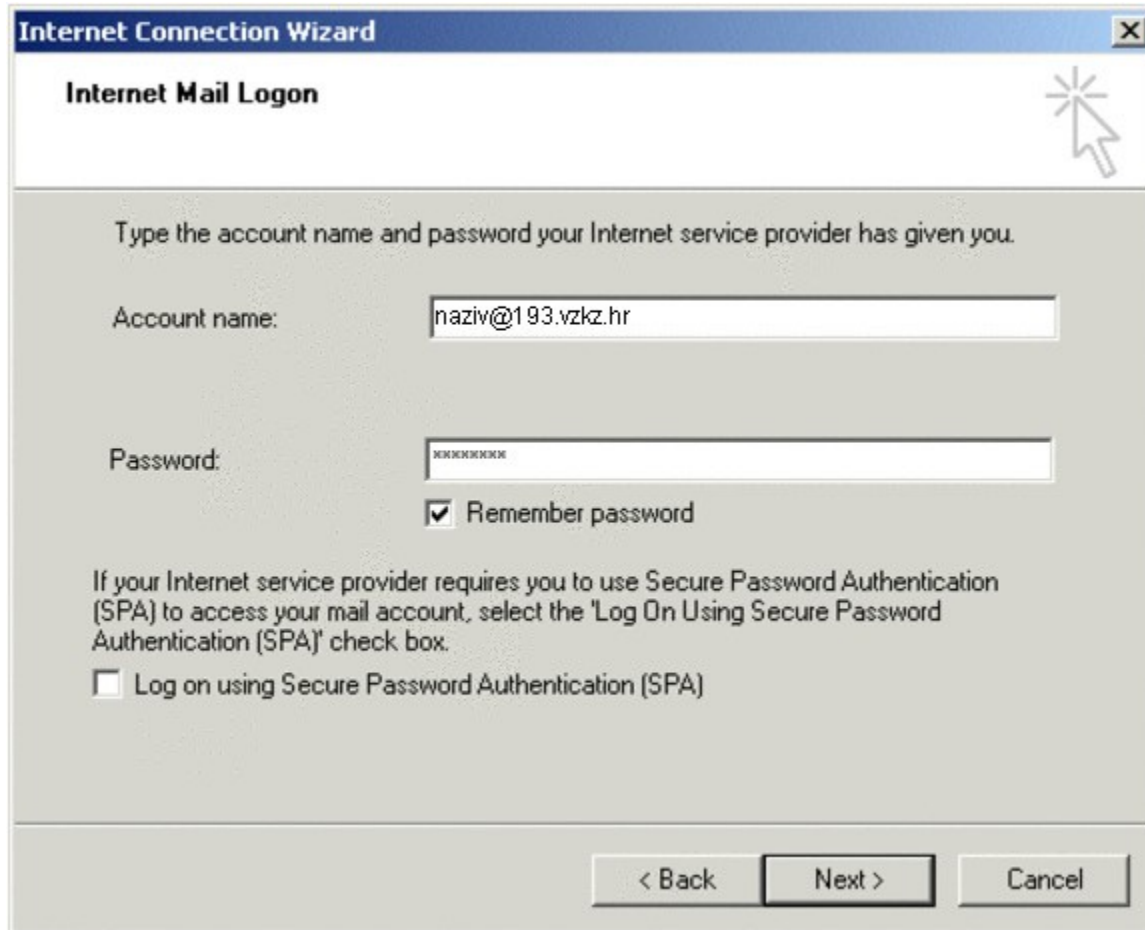
Outgoing mail (SMTP) server:

At the bottom of the window, there are three buttons: "< Back", "Next >", and "Cancel". A mouse cursor is pointing at the "Next >" button.

Kliknite gumb **Next>**.

6. U dijaloški okvir **Internet Mail Logon** u rubriku **Account name**: upišite korisničko ime. Korisničko ime je obično isto kao i e-mail adresa, primjerice naziv@vzkz.hr. Ako u rubrici nešto piše, to slobodno obrišite i upišite svoje korisničko ime.

U rubriku **Password**: upišite lozinku za elektroničku poštu.



Internet Connection Wizard

Internet Mail Logon

Type the account name and password your Internet service provider has given you.

Account name: naziv@193.vzkz.hr

Password: XXXXXXXXXXXX

Remember password

If your Internet service provider requires you to use Secure Password Authentication (SPA) to access your mail account, select the 'Log On Using Secure Password Authentication (SPA)' check box.

Log on using Secure Password Authentication (SPA)

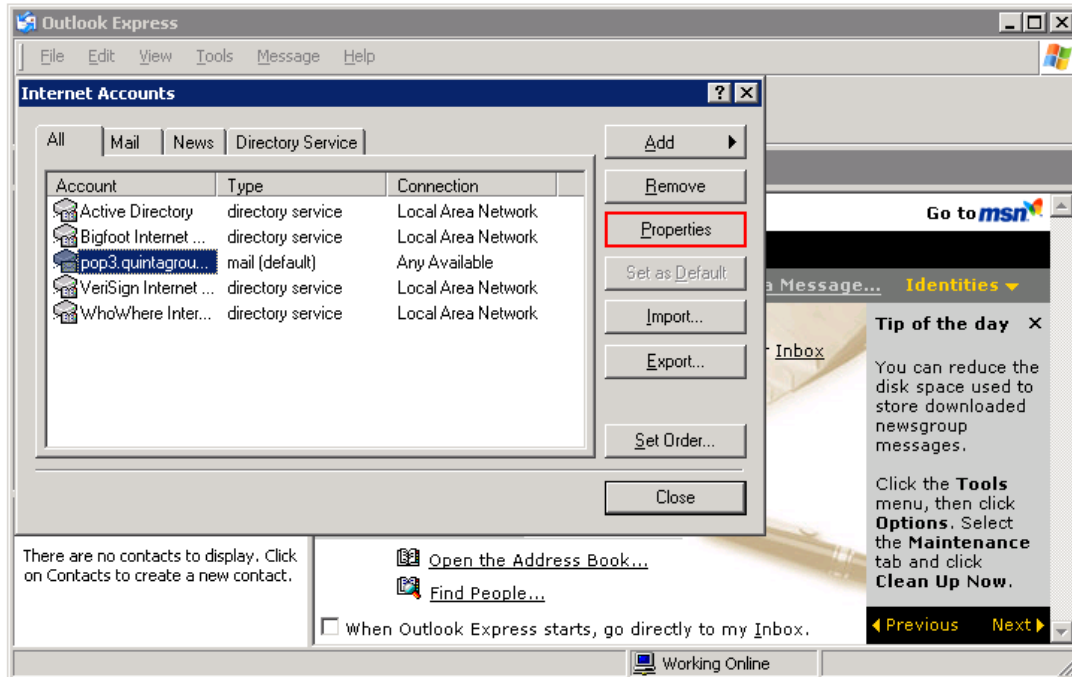
< Back Next > Cancel

Kliknite gumb **Next>**.

7. Pojavljuje se završni dijaloški okvir **Congratulations** koji vas obavještava da ste uspješno završili upisivanje parametara, pa kliknite gumb **Finish**.

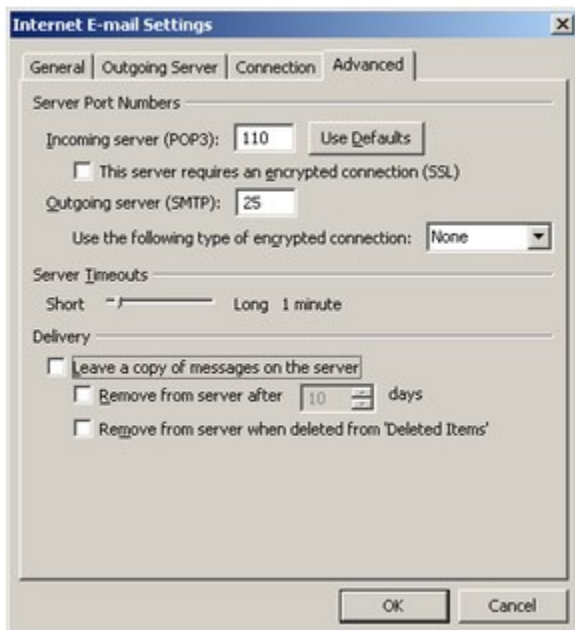
6. Kliknite gumb **Close**, i time je Outlook Express podešen za primanje i slanje elektroničke pošte preko Iskona.

8. Na kartici Internet Accounts odaberite upravo dodani račun (obično se zove mail.vzkz.hr), te kliknite na Properties.



9. Ukoliko imate potrebu čuvati kopije mailova na serveru, na kartici advanced uključite opciju „Leave a copy od messages on the server“, te uključite i opciju „Remove from server after...“, a pod broj dana upišite 5-10 dana (kako bi izbjegli zagušenje zbog ograničenog prostora na serveru) , a možete uključiti i opciju „Remove from server when deleted from 'Deleted items““.

Ako nemate potrebu čuvati kopije mailova gore navedene opcije isključite.



10. Kliknite OK, Close.